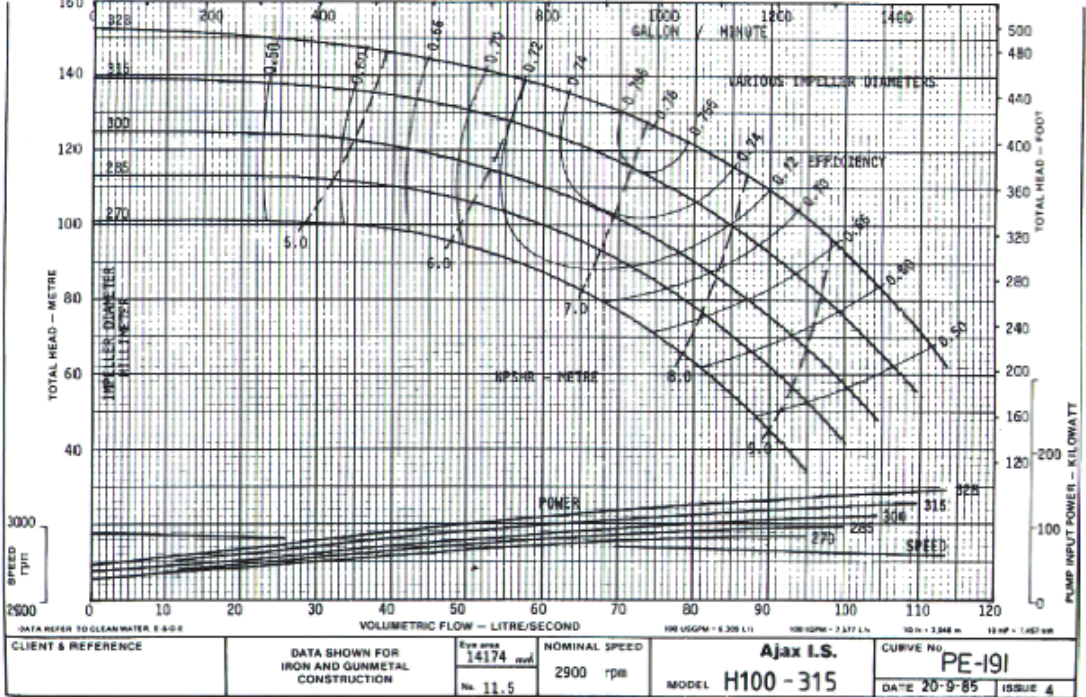




Pump Performance Curve



DATA REFER TO CLEAN WATER 1.0°C		VOLUMETRIC FLOW - LITRE/SECOND		100 USGPM = 3.785 L/MIN		100 GPM = 3.785 L/MIN		10 HP = 7.460 kW	
CLIENT & REFERENCE		DATA SHOWN FOR IRON AND GUNMETAL CONSTRUCTION		Eye area 14174 mm ²	NOMINAL SPEED 2900 rpm	Ajax I.S.		CURVE No. PE-191	
				No. 11.5		MODEL H100 - 315		DATE 20-9-85 ISSUE 4	

Note: Due to the Ajax Policy of constant research and development, Ajax Product specifications may change without notice.